



Bahar Sanat Neda Co.



Presentation

INDUSTRIAL AUTOMATION SOFTWARE
progea



**Maloney
Metalcraft**



rdi
roomdimensions
technical solutions for control room





Contents



- [Who we are](#)
- [Activities](#)
- [Organization chart](#)
- [Sales Department](#)
- [Control Department](#)
- [Metering Department](#)
- [Auto Sampler Systems](#)
- [Instrument Department](#)
- [Training Department](#)
- [Facilities](#)



About Company

Established in 2006, our company initially founded to supply control systems to oil, gas and chemical industries. Then we expanded our work by adding metering systems to our field of expertise. So now we are able to provide the supply of equipment for Oil, Gas and Petrochemical industries like never before.

Our Company has skilled staff in engineering, business and site service departments and we are willing to run Projects internationally. Our office stands in Tehran, and our workshops are located just out of Tehran.

ISO 9001:2008, ISO 14001:2004, OHSAS 18001:2007 Certified.



ISO 9001:2008



ISO 14001:2004



OHSAS 18001:2007

Direct Sales:

- Process Packages
- HMI & SCADA Software.
- Control Room design and furniture
- Control System Components.
- Instrumentation.

System Integration:

- Totally Automated Production Lines.
- Control System: DCS,ESD,PLC,HMI.
- Metering Packages.
- Auto Sampler Packages.

Engineering:

- Control Systems.
- Instruments.
- Metering Systems

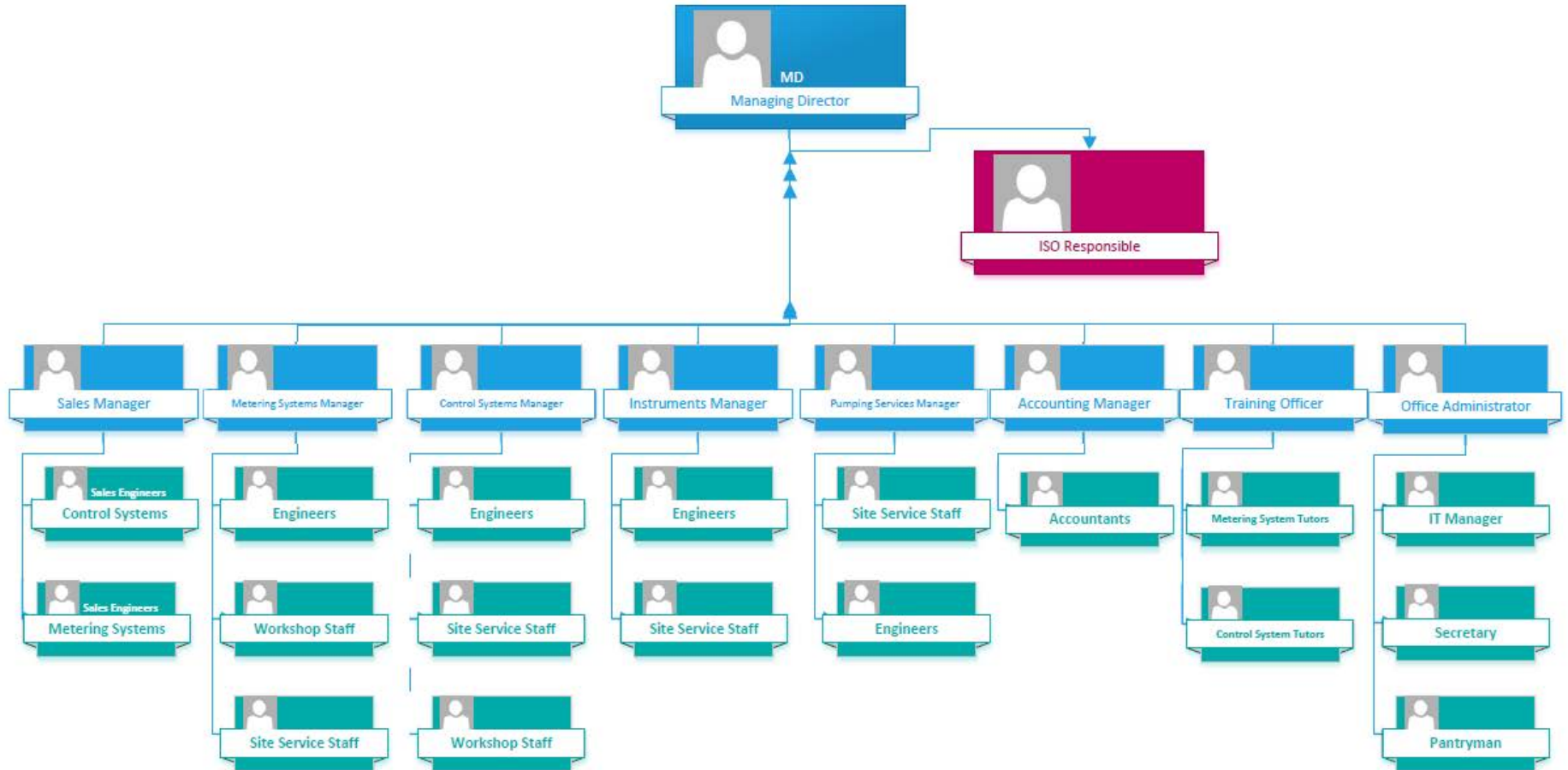
Services:

- Commissioning & Startup Services.
- Troubleshooting & Maintenance Services .

Training:

- Training on metering systems
- Training on proving systems
- Training on auto sampler systems
- Training on control systems

Organization Chart



SALES DEPARTMENT

Our Company is a supplier for Electrical Control Systems, Metering Systems, Instruments and Auto Sampler Systems.

We work closely with our clients to understand their operations and challenges. Our alliance partners have made a strong commitment with us to develop capabilities and provide seamless solutions that give you the strongest technological, competitive and strategic advantages, within your enterprise.

Our scope of supply include:

- Control Systems Components
- Field instruments and actuators, including different types of transmitters and flow meters
- Metering systems & Provers

Sales Department



A Software production Company for SCADA, HMI application

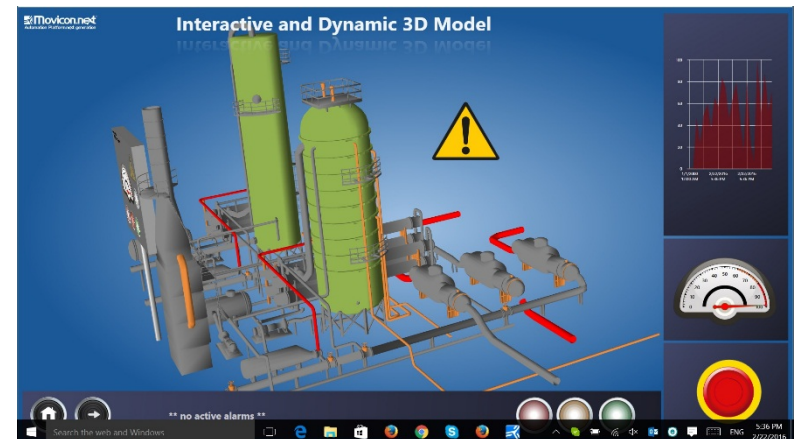
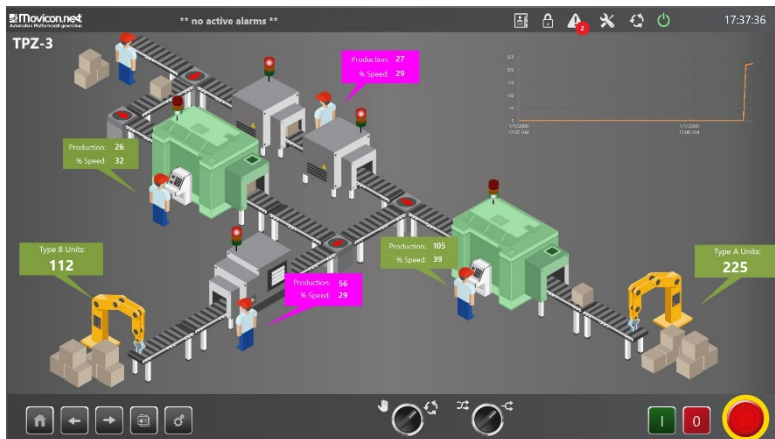
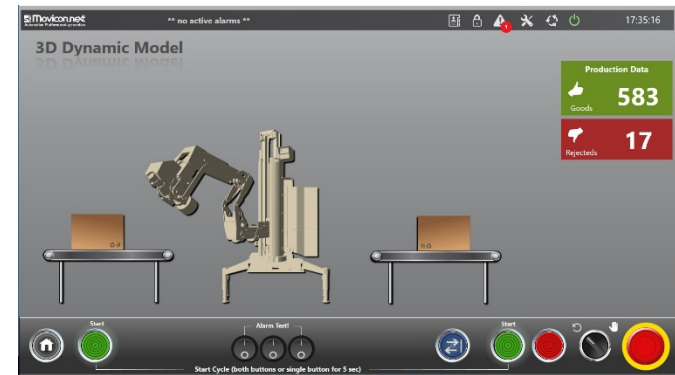


□ Movicon11

- Able to communication will almost every type of control system, 70 communication drivers available, In case a control system which driver is not available, customer can ask Progea to create it.
- Better data base management, trouble free data base, open and editable data base.
- Better graphics, rich I/O symbol library, animation possible
- Server/Client configuration possibility.
- Web publish features, clients can be PC , Android and IOS (Apple Devices)



- Movicon.next(Automation Platform.next)
New Generation of SCADA/HMI software
using recent software platforms and technologies,
Supporting 3D Graphics and animation and Multi touch



Sales Department

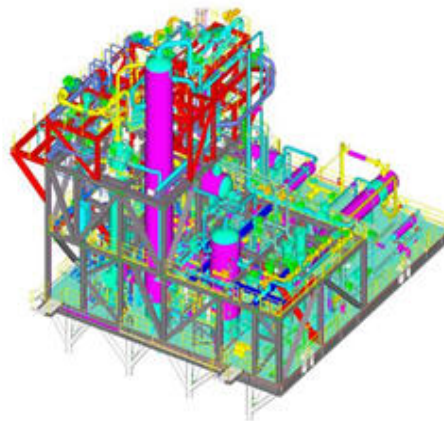


Total design of control room and furniture
Room Dimensions Iberica, Barcelona





PRODUCT AND SOLUTIONS FOR OIL , GAS AND WATER TREATMENT

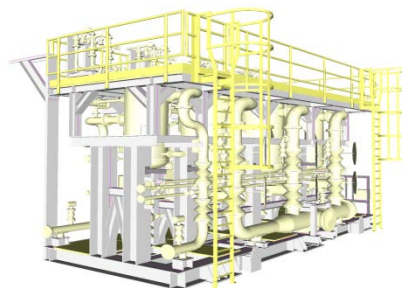
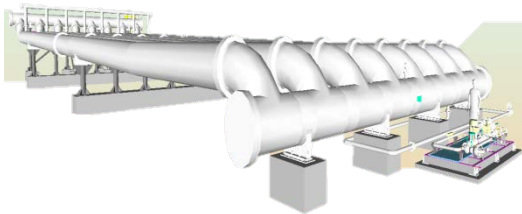


LEADING THE WAY IN ONSHORE & OFFSHORE ENERGY SOLUTIONS

PRODUCTS LEADING THE WAY IN ENERGY SOLUTIONS



- Inlet manifolds (ALL)
- 2 & 3 Phase Separators (OIL)
- Bulk Separation (OIL + WATER)
- Process Separator Internals.
- Electrostatic Coalescer. (OIL+WATER)
- Gas Dehydration equipment. (GAS)
- Fuel Gas Treatment. (GAS)
- Activated Media Gas Drying (GAS)
- Gas Sweetening Units (GAS)
- Molecular sieves (GAS)
- Mercury Removal (GAS)
- FPSO solutions. (OIL)
- Oil Process Systems
- Produced Water Treatment Systems (IGF+ CYCLONES)
- Sand Removal Clean up. (WATER)



SECTORS

LEADING THE WAY IN ENERGY SOLUTIONS



Oil & GAS



▶ TOPSIDE



▶ UP STREAM



▶ MID STREAM
▶ DOWN STREAM

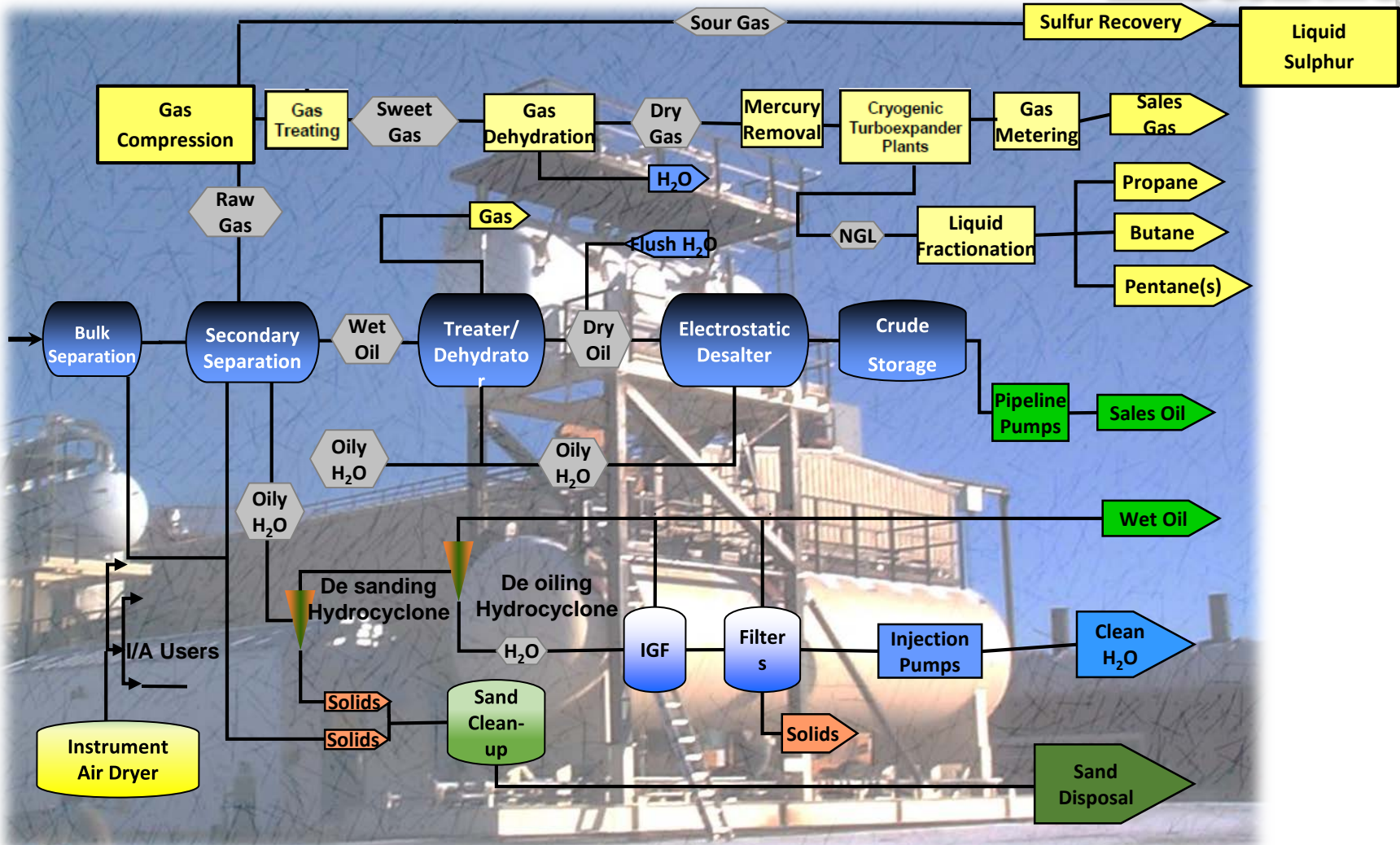


▶ F.P.S.O

We offer extensive experience of supplying these sectors with a complete range of process equipment;

SECTORS

LEADING THE WAY IN ENERGY SOLUTIONS

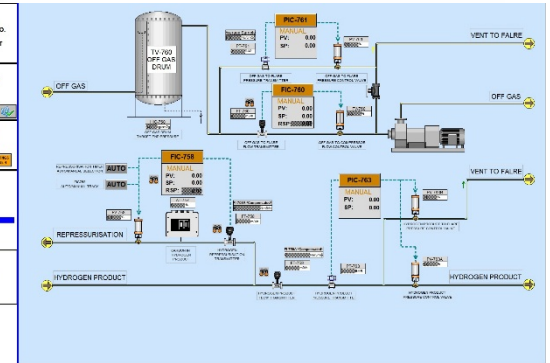
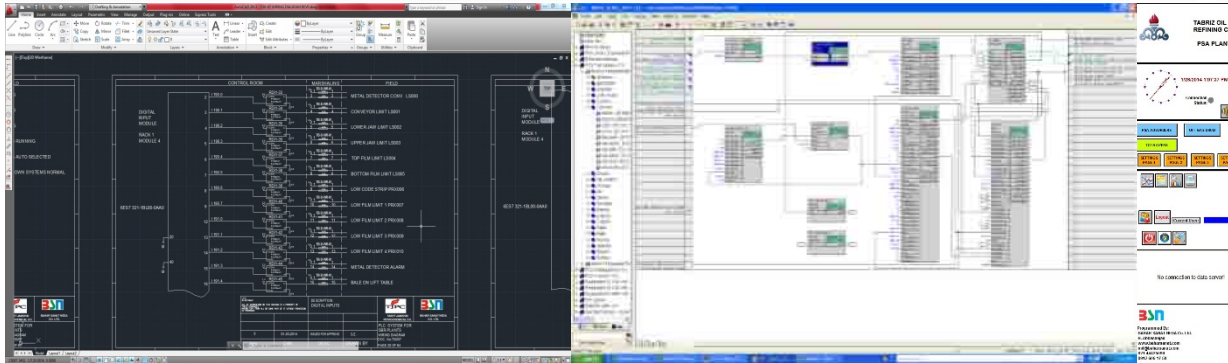




SYSTEM INTEGRATION DEPARTMENT



Control Systems department is one of the key parts of our company activities and we have supplied many control systems to different clients from government and private sections. we supply different types of control systems like DCS, ESD, FCS, F&G, PLC, SCADA and Computer control systems, also we are not tied to a specific manufacturer products which provides us with the desired flexibility when it comes to choosing the proper control system.



• Engineering:

- Consultant in early steps of design and basic design
- Documentation
- Preparing I/O lists
- Design
- programming of control systems

• Assembly:

- Assembly of Control System in Our Work Shop

• Services:

- Start-up
- Pre commissioning and commissioning
- Start-up and Site Services
- Designing Control Rooms
- Maintenance and repair
- Technical support to upgrades and evolution
- Safety services
- Online help and support

• Applicable Industries

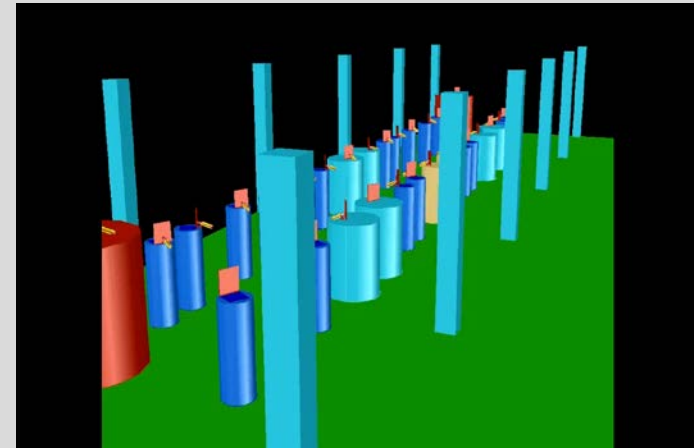
- Oil & Gas Plants
- Petrochemical and Chemical Plants
- Power Plants
- Cement and Steel Industries
- Water Industries
- Food & Beverage Industries
- Pharmaceutical industries
- Factory Automation
- Crude oil pipe line and refinery, gas pipe line and refinery, water/oil and gas pumping stations, drug manufacturing plant, petrochemical plant, H₂S and molten Sulphur granulation plan





Some of key Projects:

1. Formulation Unit For Brake Pad Production Co
CLIENT: PARS LENT Co. ISFAHAN-KASHAN,
Project completion: 2016





Some of key Projects:

2. Natural Gas Underground Storage Project
DCS & ESD system to control manifold for 20 Wells
& Utilities
SERAJEH QOM Project
Client : ICOFC
Project completion: 2010





Some of key Projects:

3. DCS & ESD System to Control Etoxylate & MPG Chemical Plants

Client: KIMYAGARAN Chemical Industries – ARAK – IRAN

Project completion: 2008



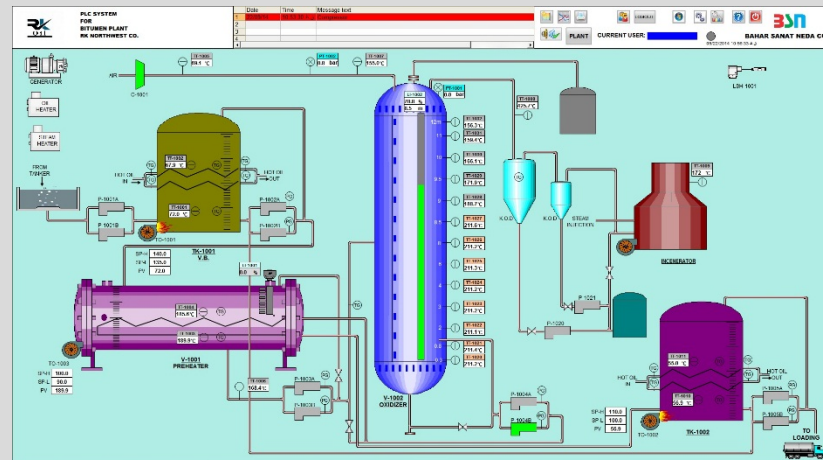
Some of key Projects:

4. PLC system to control 6 off Gas wells
KANGAN GAS FIELD – SOUTH OF IRAN
CLIENT: ICOFC
Project completion: 2008



Some of key Projects:

- 5. PLC system to control Bitumen Plant
CLIENT: ARKA North-West
Project completion: 2013

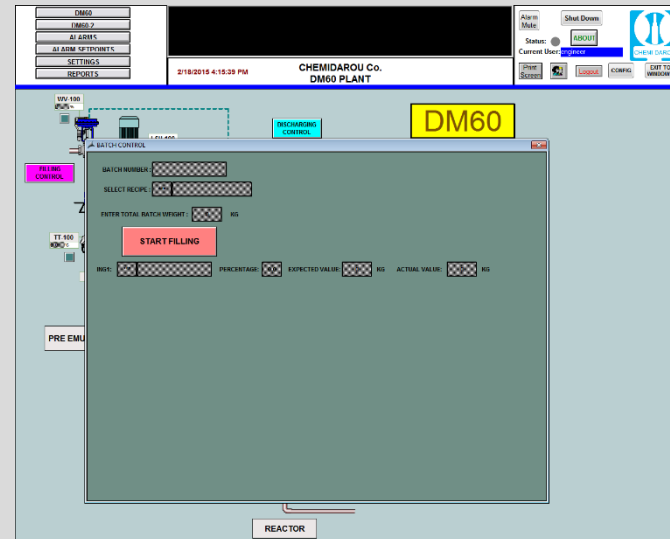


Some of key Projects:

6. PLC system and weighting system of Tanks for Formulation Blending Unit, Resin Plant

CLIENT: CHEMIDAROU

Project completion: 2007



Some of key Projects:

7. PLC system and Dextrose preparation system using tank weighing
CLIENT: SHIRAZ SERUM, SERUM PLANT
Project completion: 2013





Energy managers have long known the value of energy-use data. And with recent advances in energy-use metering – increased functionality at lower costs – obtaining these data in a cost-effective manner is now becoming a standard practice.

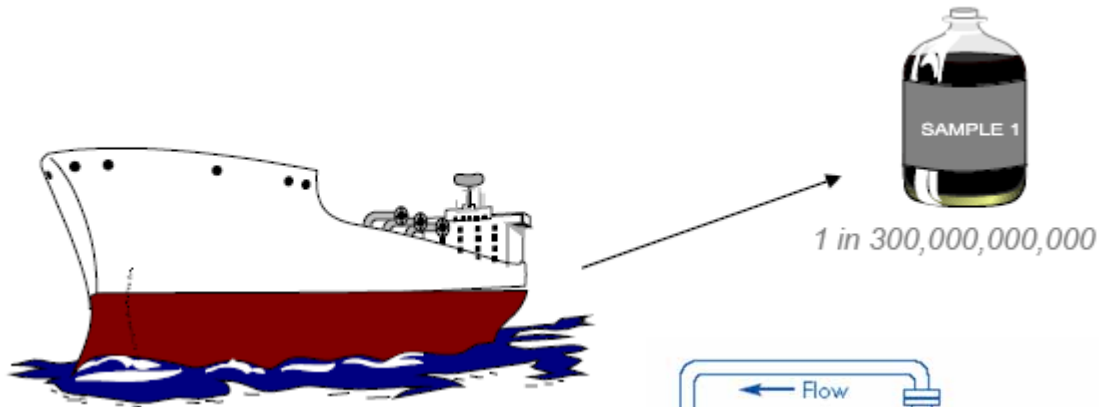


Crude oil and condensate sampling

The aim of sampling:

- **Measure water**
- **Measure quality**
- **Measure density**

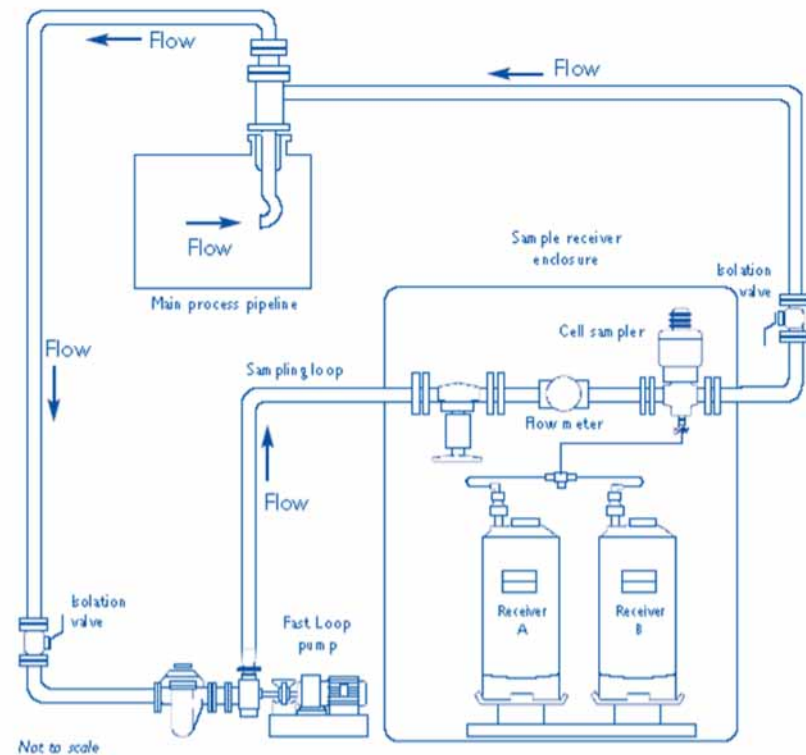




- Crude oil cargo - 300,000 m³
- 2,000 - 10,000 (1cc) sample grabs taken
- 2 - 10 litre sample
- Sample taken to laboratory for analysis
- 1 – 100ml analysed for BS&W
- (Depending on method)
- Volume analysed can be 1 in 300,000,000,000

Hydrocarbon sampling standards

- ISO 3171
- API 8.2
- IP 6.2



Auto Sampler Systems



Some of key Projects:

Auto Sampler package with a PLC and a Monitoring System for crude oil transmission line

Client : Tabriz Refinery

Project completion: summer of 2014.



TABRIZ OIL REFINING CO.
AUTO SAMPLER SYSTEM FOR CRUDE OIL INLET LINE

BAHAR SANAT NEDA CO.
www.baharsanat.com

2/19/2015 9:05:19 AM

AUTOSAMPLER BASIC SETTINGS

EM. STOP P.B. (Red)
PHASE CONTROL (Yellow)
HEATER OFF (Yellow)

NO CAN IN PLACE (Yellow)

NO CAN IN PLACE (Yellow)

DOOR OPEN (Yellow)

EXPECTED W1: 0 g, DEV. 1: 0.0 %

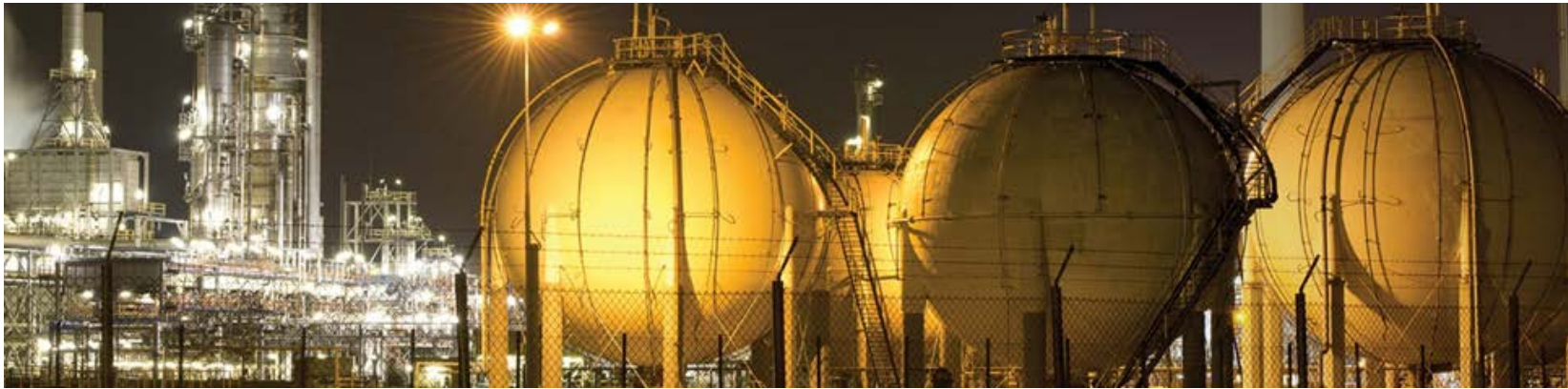
EXPECTED W2: 0 g, DEV. 2: 0.0 %

AUTO SAMPLER SETTINGS

LINE SIZE	0	inch
NORMAL FLOW RATE	0.000	m3/hr
DENSITY	1	kg/m3
IGM4 SIZE	0.000	ml
CAN 1 WEIGHT LOW SCALE	0	g
CAN 1 WEIGHT HIGH SCALE	0	g
CAN 2 WEIGHT LOW SCALE	0	g
CAN 2 WEIGHT HIGH SCALE	0	g
SAMPLE FILL UP	0	sec
STANDARD SEC	0	sec
RAW INTERVAL	0.00	sec
LOW SAMPLES	0	sec
SAMPLE INTERVAL	0.00	sec
RAW INTERVAL	0.00	sec
CAN OVERFLOW	0.00	sec
MANIP. MODE	0.00	sec

REAL TIME FLOW
 REPAD FLOW
 ANALOG TYPE FLOW INPUT
 PULSE TYPE FLOW INPUT

DOOR VOLUME: 0 ml
BATCH DURATION: 0 HOURS
CAN EMPTY: 0 ml
CAN CRASH: 0 ml
CAN MAX: 0 ml
VOL IMP: 0 ml
CAN VOLUME EX: 0.000 %
CAN VOLUME EX: 0.000 %
FLOW RETURN VALVE: 0 m3/hr
ALARM SETPOINT: 0 m3/hr
FLOW HIGH ALARM SETPOINT: 0 m3/hr



What we do in Instrument Department:

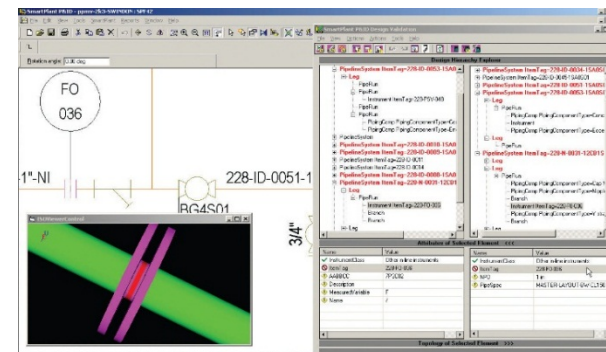
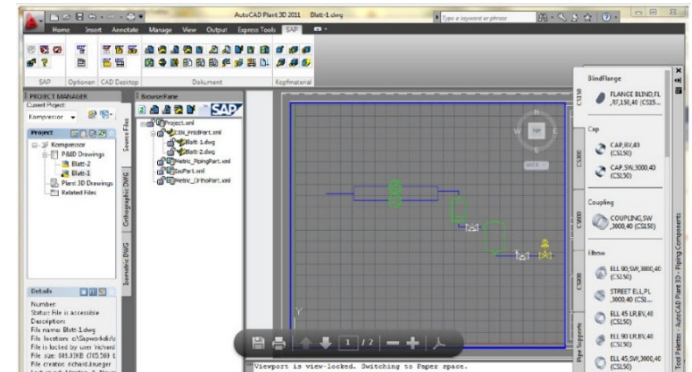
Our Instrument Department includes:

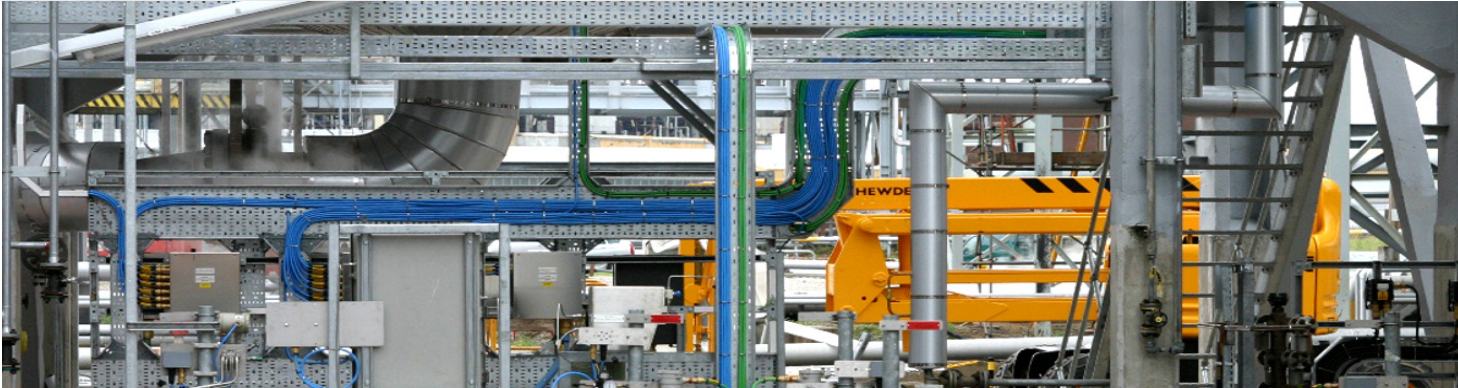
- Supply of Instruments
- Engineering
- Site Services



Engineering :

- P&ID Design & Drawing
- Tender Document Preparation
- Cause & Effect Matrix
- Operating Manual
- Preparation of Arrangement Drawing for Instruments, Trays, Conduits & Junction Boxes
- Preparation of Hook-up for Instrument Installation, Instrument Pressure Piping & Instrument Air Piping
- Consultation, Design, Supervision & Execution of Analyzers
- Consultation, Training, Supervision & Execution of Instruments
- Equipment Arrangement Design & Cabling in Control Room
- Technical Specification Document of Instrumentation Design
- Design & Calculation of Control Valve, PSVs and Orifices
- Preparation of Instrument Datasheet
- Logic & Control Loop Diagram
- MTO & MR





Construct and Implementation:

- **Loop/Functional Testing**
- **Pre-calibration/Calibration of Instrumentation**
- **Hazardous Area Installations and Inspections**
- **Installation schedules including material take off**
- **Installation drawings including Loop and schematic diagrams**
- **Equipment specification including technical appraisal and recommendations**
- **Functional tests including test method instruction sheet**
- **As built document records**
- **Installation of Instruments According to Hook-up**
- **Loop Check & Energize Continuity Check**
- **Installation of Support, Trays, Ducts & Conduits**
- **Installation of Junction Boxes & Local Panels**
- **Cabling of Control Systems**
- **Execution of Instrument Air Line**
- **Installation of Analyzers**



Our pump department with combined professional services is trained and focused on solving problems and meeting customer needs. We have the knowledge and resources to troubleshoot your current system, or get your new system designed, installed and running.

The pump department provides:

- Engineering and Documentation
- Pump Selection consultancy
- Storage tank and booster system installation
- Plant commissioning and startup
- old plant repair / extension and modifications
- Special pumps
- Pump Maintenance Services
- Pumps Interlocks, sequences and Safety Issues on Control Systems



In today's business environment you want to equip your employees with the skills and knowledge they need to maximize their performance creating more value to your company and a motivated workforce. BSN Co. help you bring together all the pieces of workforce training into a comprehensive workforce training solution.

We have done some professional training courses almost for National Iranian Oil company staff in their own facilities. Below are some courses that we establish:

Training on Metering systems, Proving Systems, Auto Sampler systems and Control Systems.

We establish the training courses with 2 main aims:

- to prepare a good requisition for systems at the time of order and select the most appropriate specifications
- Helping the operations people to operate the systems in best and most efficient way and help them to have a long living systems and keep their accuracies

Office

Located in northwest of Tehran

Unit 16, Number 45, Azari St. , Ashrafi Esfahani Exp. Way, Tehran, Iran

Tel : 021-44275227(5 Lines)

Fax : 021-44275226

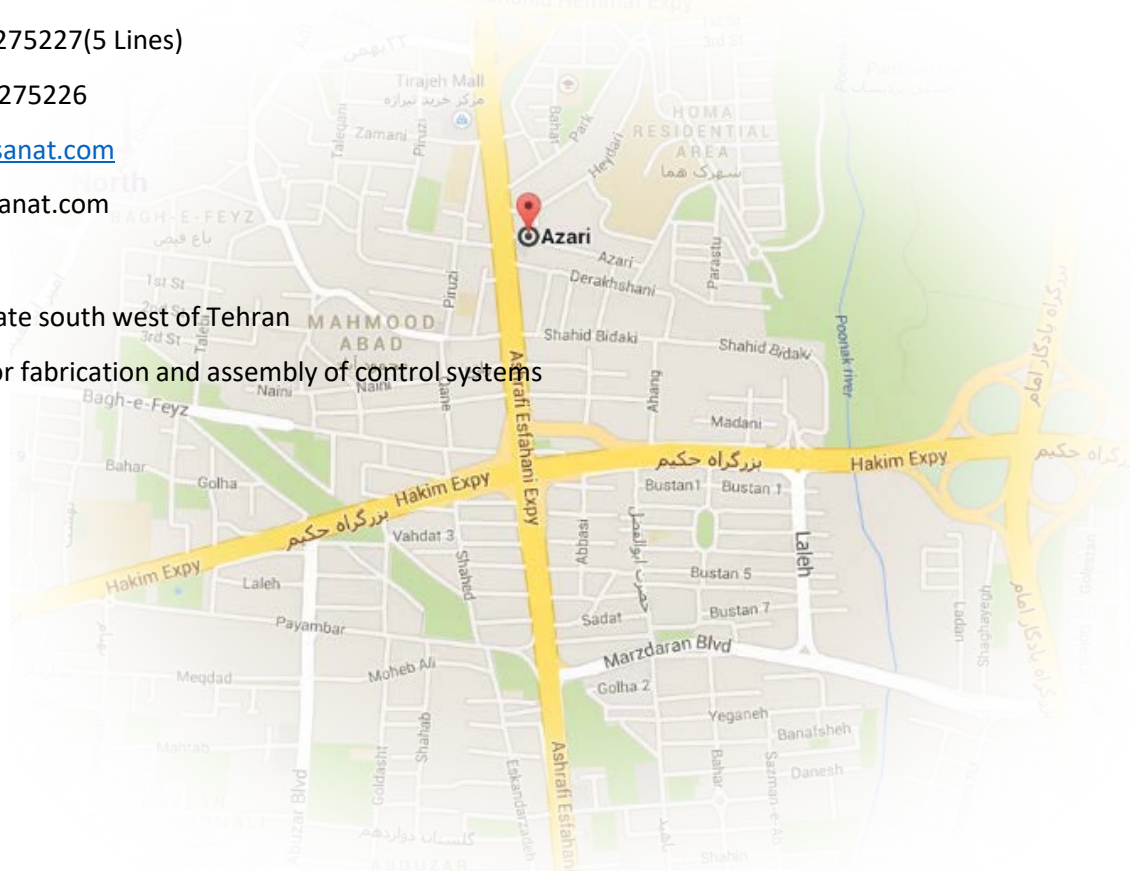
www.baharsanat.com

md@baharsanat.com

Workshop

Industrial State south west of Tehran

Dedicated for fabrication and assembly of control systems



Thank you

[Start Over](#)

